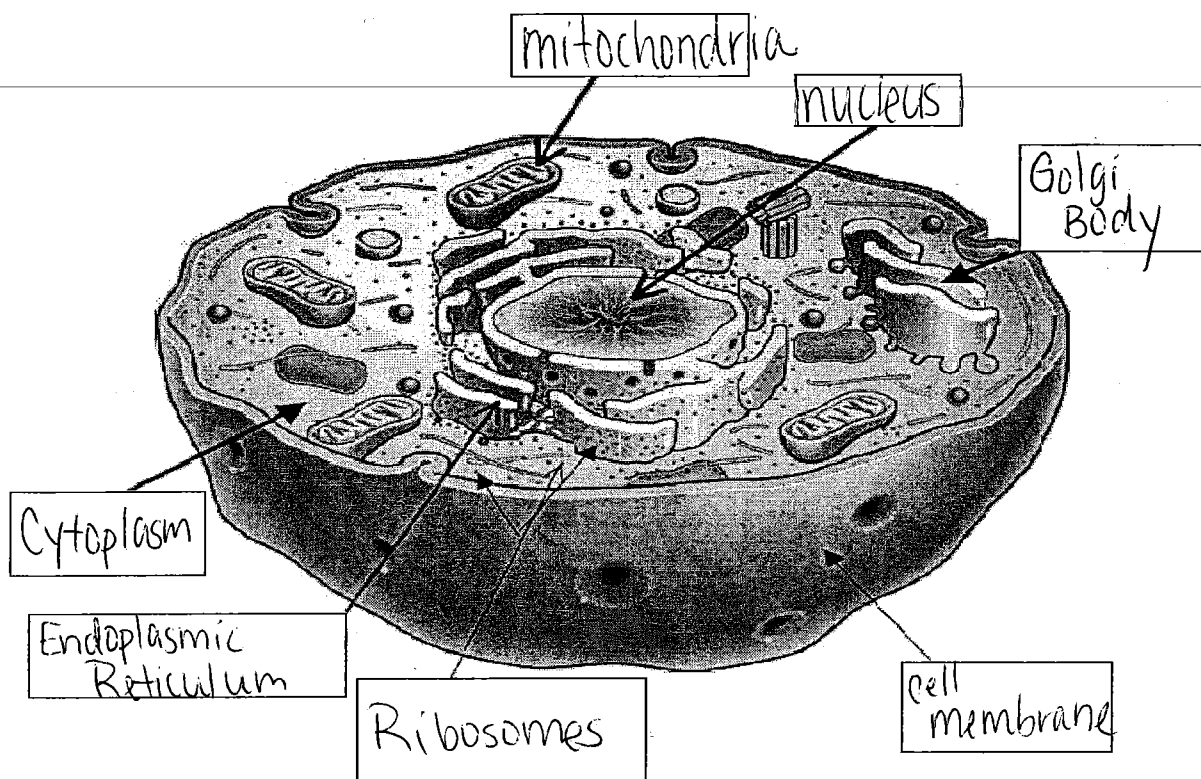
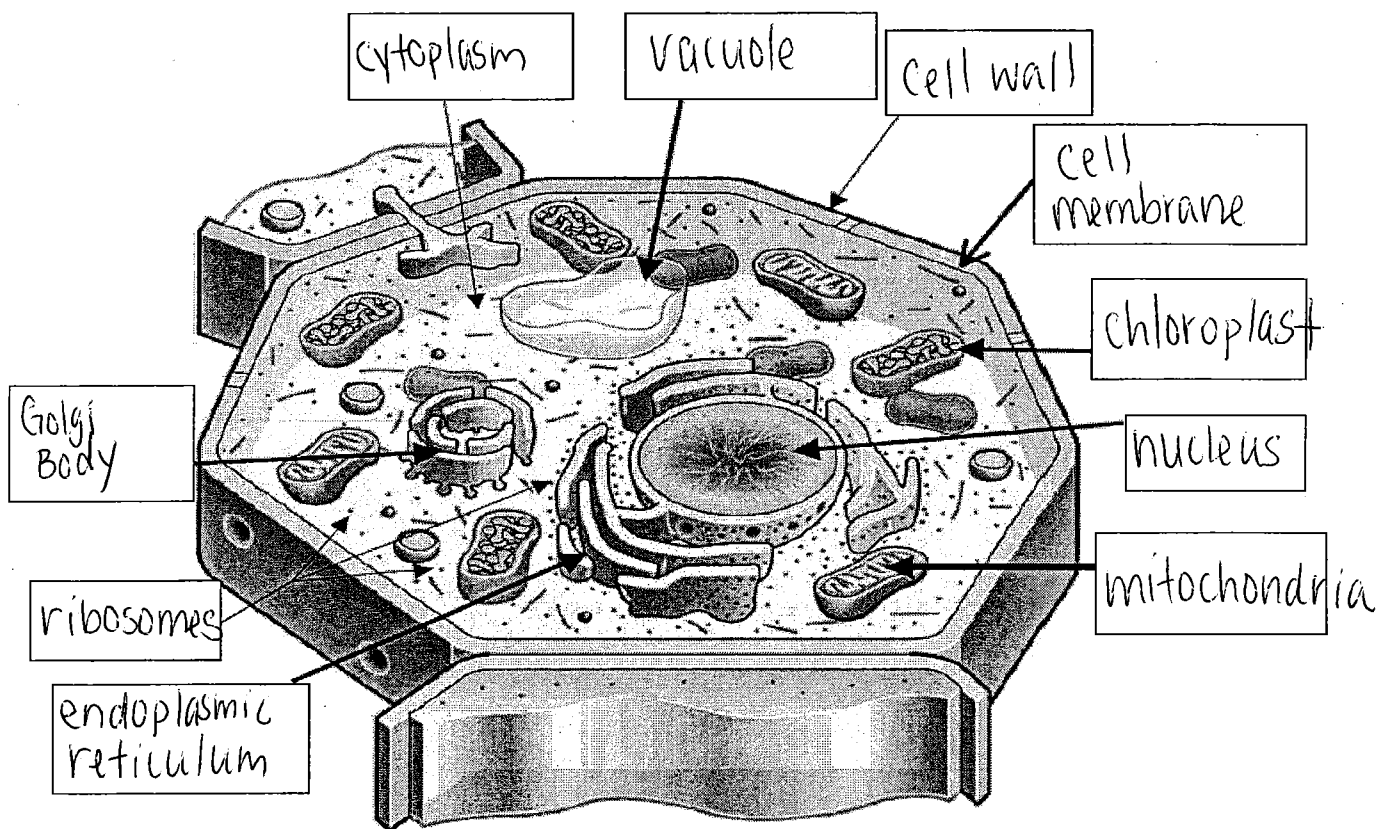


Animal Cell



Plant Cell



Name: _____

Per: _____

CELL PARTS

Define organelle: _____

Cell Part	Description	Function
Cell (Plasma) Membrane	Semi-permeable layer surrounding cells	Food and water enter through the membrane and waste products leave
Nucleus	Located generally in the center of the cell, surrounded by a membrane	Directs all cell's activities ("boss") and contains info. to make the cell work (DNA).
Cytoplasm	gelatinlike substance inside the cell surrounding the organelles	holds the organelles in place
Vacuole	membrane-bound sacks (Very large in plant cells)	stores water, food, and waste products
Cell Wall	surrounds a plant cell	Protects the cell and gives it shape
Mitochondria	peanut shaped in cells	release the energy from the food ("powerhouses")
Chloroplasts	found only in plant cells - green and bean shaped.	contain chlorophyll used during photosynthesis
Endoplasmic Reticulum (ER)	maze-like cell part that extends from the nucleus to cell membrane	transports food or other materials from one part of cell to another
Ribosomes	Some float in the cytoplasm and others attach to the ER (tiny, round)	Creates protein
Golgi Apparatus (Body)	stacked, flattened membranes	sorts proteins and also helps to transport materials